

# 72" Table (*Dining Height*)

#872D English Garden Tables



(717) 354-8998 • (877) 560-5966  
New Holland, PA



## ASSEMBLY INSTRUCTIONS



### Tools Required

- Hammer
- #2 Square Head Bit
- Power Drill
- 7/16" Socket or 7/16" wrench

### Included Hardware

<b>A</b>		16 2" Screws
<b>B</b>		12 2½" Screws

### Instructions:

1. Unpack items from box(es). Be sure to match any numbers & letters that you may find on the pieces.
2. Place the table top upside down and prepare to fasten the leg assemblies to the table top. Center the leg assembly on either side of the aluminum rails on the bottom of the table top. Fasten the legs of the leg assemblies using the pre-drilled holes using 2 (B) 2½" Screws. Repeat on the remaining 3 legs. (Illustration 2)
3. After you have fastened the leg assemblies to the table top, prepare to fasten the leg braces. Using 4 (A) 2" Screws on each side, fasten the braces to the leg assemblies. Repeat on the other side of the brace fastening to the center leg assembly. (Illustration 3)
4. Repeat with the second brace.
5. For larger tables with a center leg, screw the umbrella holder in the center of the brace assembly using 4 (A) 2" Screws. (Illustration 4)

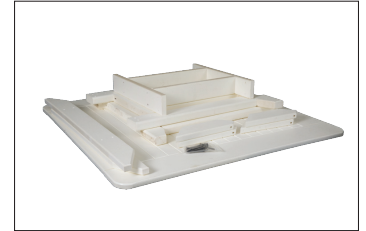


Illustration 2

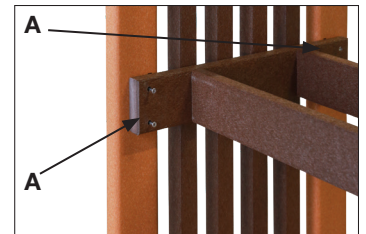


Illustration 3

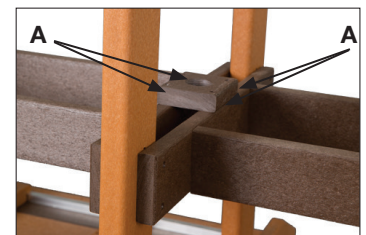


Illustration 4